



# ALAC Partnership Local Government Conference 2008

## *New Zealand Police Alcohol Action Plan*

Superintendent Bill Searle  
National Manager Community Policing

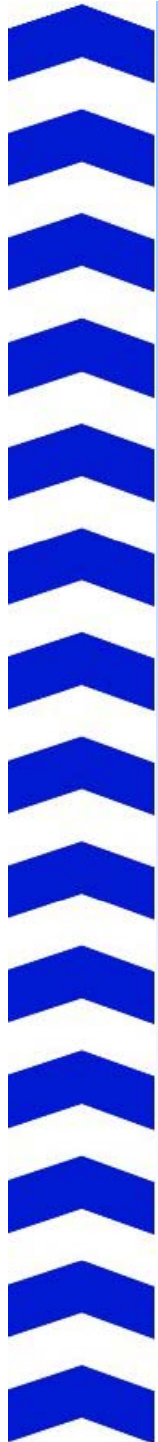




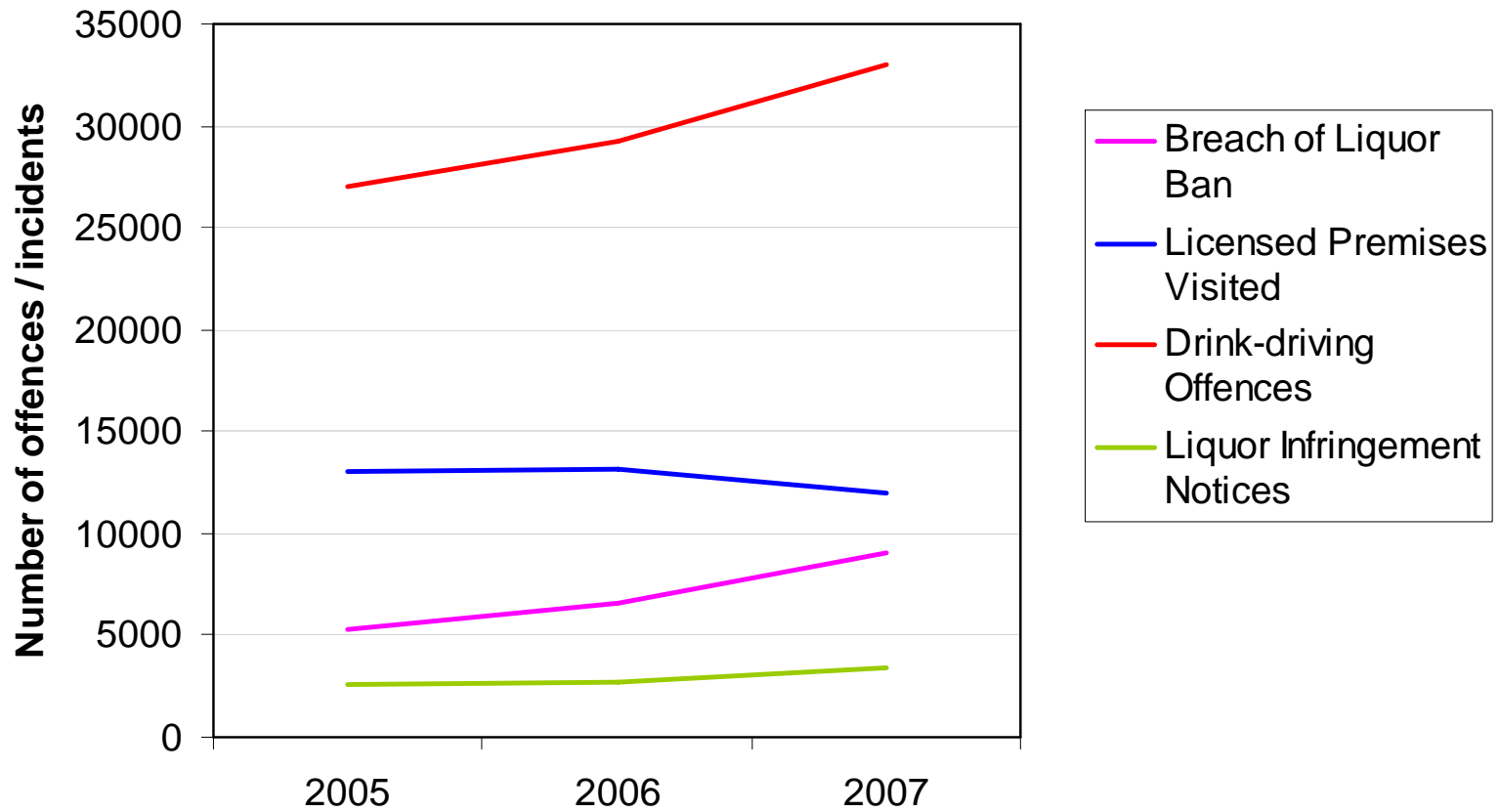
# Police Alcohol Action Plan

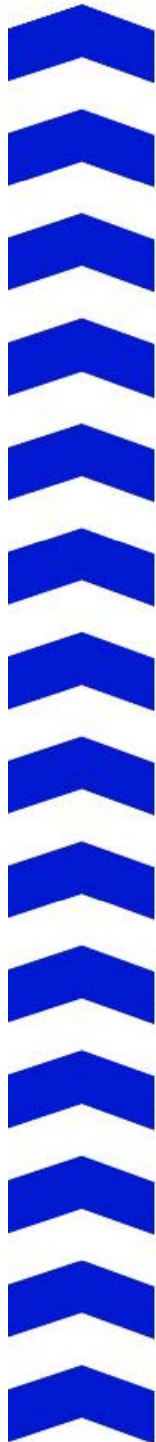
***“To improve Police’s ability to prevent and reduce alcohol related harm”***

- 1) Minimising alcohol related crime and crashes
- 2) Tailoring responses for special events and population groups
- 3) Developing and supporting Police’s workforce; and
- 4) Investing in research and evaluation

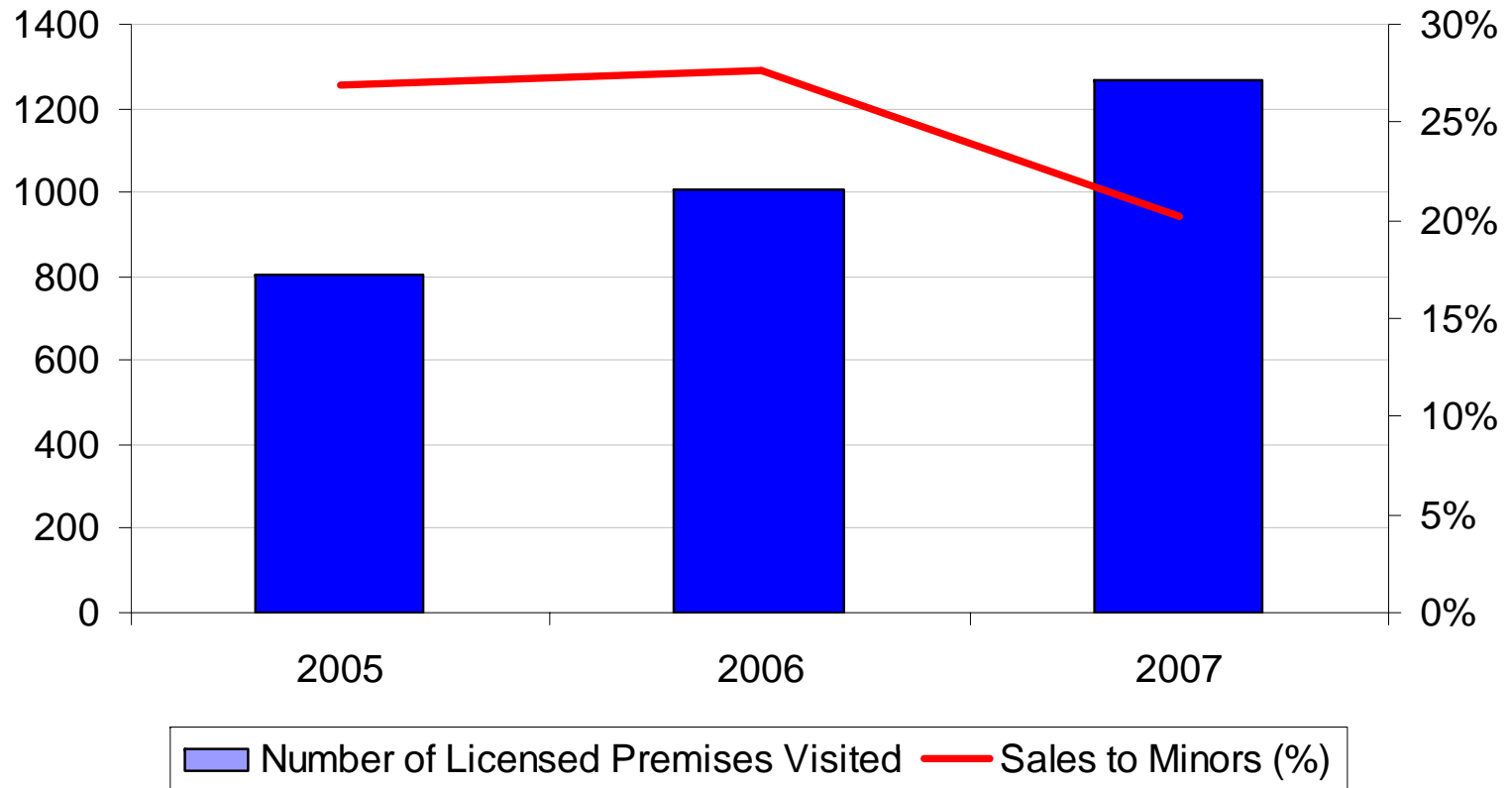


## Police alcohol-related crime prevention activity





### Controlled Purchase Operations (2005 - 2007)





# Police Alcohol Action Plan

*“To improve Police’s ability to prevent and reduce alcohol related harm”*

- 1) Minimising alcohol related crime and crashes
- 2) Tailoring responses for special events and population groups
- 3) Developing and supporting Police’s workforce; and
- 4) Investing in research and evaluation